

Tutorial: Syncing TRAKTOR PRO with Ableton Live

TRAKTOR PRO makes it easy to sync external software or hardware to the tracks you play. One popular application is to sync TRAKTOR with Ableton Live. This tutorial provides you with an easy step-by-step guide to configure this kind of setup.

On a general note, we will focus this tutorial on the more popular scenario of running each application on a separate computer. It is also possible to run TRAKTOR PRO and Ableton Live on the same machine, and use a “virtual Midi cable” to transfer the Midi clock between both applications. This can be done with the “IAC Driver” under Mac OS X, and with the “Midi Yoke” freeware tool on Windows (search the Internet for additional info).

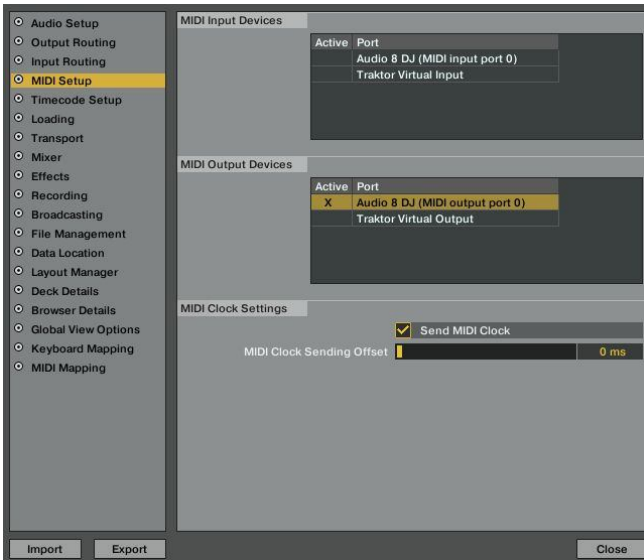
Let’s get started - launch TRAKTOR PRO on one machine and Ableton Live on the other computer. Both machines need to be connected through a Midi cable. In this tutorial, we will assume that an AUDIO 8 DJ interface is connected to each computer, though any Midi interface should work.

Plug a Midi cable into the „MIDI Out“ port of your AUDIO 8 DJ interface that is connected to the machine running TRAKTOR PRO, and the other end of the cable into the „MIDI IN“ port of the interface that is connected to the computer that runs Ableton Live.

Because TRAKTOR PRO will send the Master syncing signal, we will configure it first.

Open the TRAKTOR PRO preferences and choose „MIDI Setup“, then activate the Midi out port of your AUDIO 8 DJ interface by clicking in front of the device name in the „MIDI Output Devices“ section. Below this dialogue you will find a checkbox

called „Send MIDI clock“. Activate this one and the „MIDI OUT“ LED on your AUDIO 8 DJ interface should start flashing.



After setting up TRAKTOR PRO, it's time to care of the machine that has Ableton Live running.

Open the preferences dialogue and choose „Midi Sync“ from the menu. The lower part of this page shows you a list of available midi ports. To use the TRAKTOR PRO Midi clock in Ableton, you need to activate the sync button next to the list entry „Input: Audio 8 DJ In“.

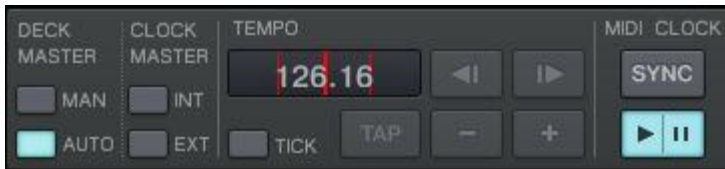


When „Sync“ is activated, a new icon labelled „EXT“ will appear next to the TAP button in the upper left corner of the Ableton Live interface.



Clicking on the „EXT“ button makes the software start listening for a clock signal on the chosen midi input port.

Now you just need to start sending the Midi clock from TRAKTOR PRO. Open its the master clock panel in the global section and click on the play button that starts sending the midi clock.



Now you can start playing your music on both machines and they will always stay in perfect sync as long as the Midi clock is being sent.

A further note: If the tempo of both machines match, but you still notice an offset, you have to adjust the midi offset on the computer that runs Ableton Live. Open the midi preferences in Live (where you already have selected your midi in port) and click on the little arrow next to the name of the selected sync device. The arrow opens an advanced midi panel where you can adjust the midi offset in the upper row. Move the slider until the phases of both machines match.

