

# TRAKTOR KONTROL S4



## Log Wheel Calibration Guide



The information in this document is subject to change without notice and does not represent a commitment on the part of Native Instruments GmbH. The software described by this document is subject to a License Agreement and may not be copied to other media. No part of this publication may be copied, reproduced or otherwise transmitted or recorded, for any purpose, without prior written permission by Native Instruments GmbH, hereinafter referred to as Native Instruments. All product and company names are <sup>TM</sup> or <sup>®</sup> trademarks of their respective owners.

Document authored by: Christopher Steel

Special thanks to the Beta Test Team, who were invaluable not just in tracking down bugs, but in making this a better product.

---

### **Germany**

Native Instruments GmbH  
Schlesische Str. 29  
D-10997 Berlin  
Germany  
[info@native-instruments.de](mailto:info@native-instruments.de)  
[www.native-instruments.de](http://www.native-instruments.de)

### **USA**

Native Instruments North America, Inc.  
5631 Hollywood Boulevard  
Los Angeles, CA 90028  
USA  
[sales@native-instruments.com](mailto:sales@native-instruments.com)  
[www.native-instruments.com](http://www.native-instruments.com)



© Native Instruments GmbH, 2010. All rights reserved.

---

---

# Table of Contents

- 1 Introduction ..... 5**
- 2 Calibration in Traktor ..... 6**
  - 2.1 Option 1: Calibrate ..... 8
  - 2.2 Option 2: Restore ..... 12
  - 2.3 Jog Wheel Calibration Failure ..... 12
- 3 Calibration in Controller Editor ..... 14**
  - 3.1 Option 1: Calibrate (NEXT button) ..... 16
  - 3.2 Option 2: Restore ..... 20
  - 3.3 Jog Wheel Calibration Failure ..... 21
- 4 Further Assistance ..... 22**

# 1 Introduction

This guide describes the steps required to recalibrate the jog wheels on the TRAKTOR KONTROL S4 controller. Before continuing please ensure that you have installed the latest TRAKTOR and Controller Editor updates available via the Service Center application. The jog wheels on the TRAKTOR KONTROL S4 can be recalibrated at any time to optimize the touch sensitivity of the wheels for scratching.

Calibration will not only optimize the wheels but can also resolve the following potential problem scenarios that may occur if the TRAKTOR KONTROL S4 is dropped or transported inappropriately:

- A lot of pressure is required to scratch.
- It is not possible to scratch with the jog wheel at all, i.e. pressing down on the jog wheel does not stop playback of the track.
- A track in the deck does not continue to play even though the jog wheel is no longer being touched and the PLAY button is lit. If this is the case the [Load](#) button on the corresponding deck will also remain lit up at all times, indicating that the Scratch On function is activated.



The jog wheels can be recalibrated using the same calibration routine in the Traktor software or Controller Editor. Both options are described in separate sections below.

## 2 Calibration in Traktor

1. Start the TRAKTOR software and then open the Preferences window by clicking on the **Preferences** button highlighted in red in the image below.



- In the Preferences window click on the [Traktor Kontrol S4](#) item in the left pane to open the S4 controller preferences as illustrated in the next image.



- In the [Calibration](#) section click on the appropriate jog wheel recalibration button (highlighted in red above):
  - [Recalibrate Left](#): Starts the calibration dialog to recalibrate the left jog wheel (Deck A/C) on your S4 controller

- **Recalibrate Right:** Starts the calibration dialog to recalibrate the right jog wheel (Deck B/D) on your S4 controller



The remainder of this section will cover calibration of the left (Deck A/C) jog wheel. To recalibrate the right jog wheel the steps are exactly the same except that “left” is replaced with “right” in all the dialog windows.

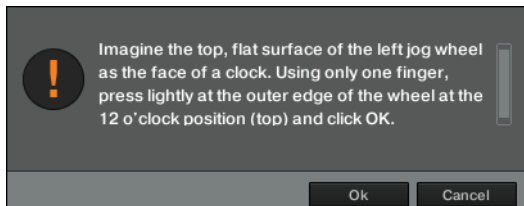
There are **two calibration options:**

- **Calibrate:** Allows you to manually recalibrate the jog wheel
- **Restore:** restores the factory calibration settings of the jog wheel

These options are covered in more detail in the sections below. To return to the Preferences window without recalibrating click **Cancel**.

## 2.1 Option 1: Calibrate

1. Click on the **Calibrate** button to display the first of the manual calibration windows (Note: Clicking **Cancel** in any of the calibration windows will return you to the Preferences window and maintain the existing calibration settings of your jog wheel).

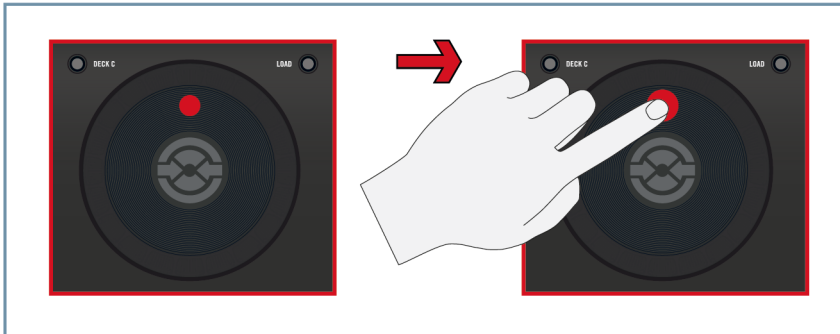




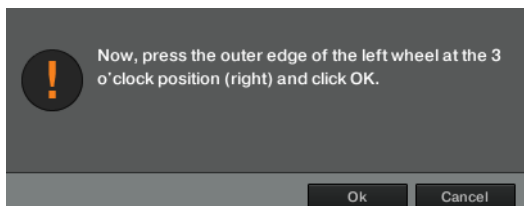
- As described in the instructions, imagine the top, flat surface of the jog wheel as the face of a clock.



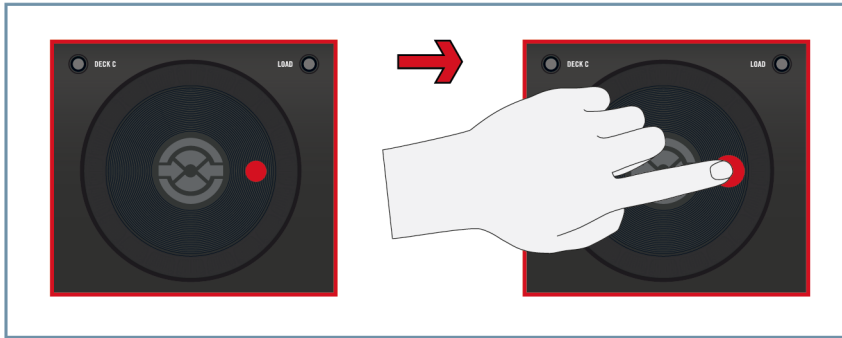
- With one finger press at the edge of the top surface of the jog wheel lightly at the 12 o'clock position (see image below). For optimal calibration press as close to the edge of the flat surface as possible (as shown by the red dot in the image) but do not press on the rubber outer rim of the wheel.



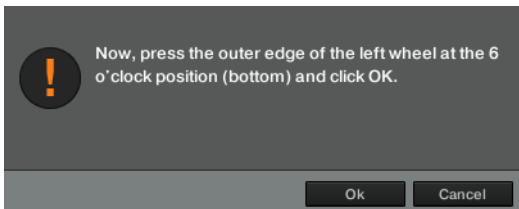
- Release the jog wheel and click **Ok**. If the wheel was pressed correctly the following window is displayed.



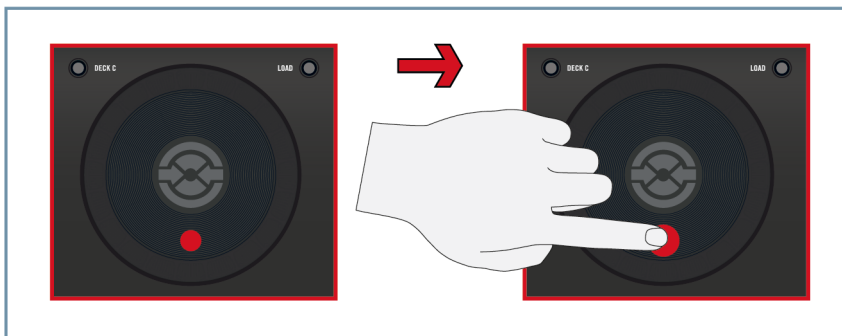
- Following the instructions press and release the top surface of the jog wheel at the 3 o'clock position as illustrated below.



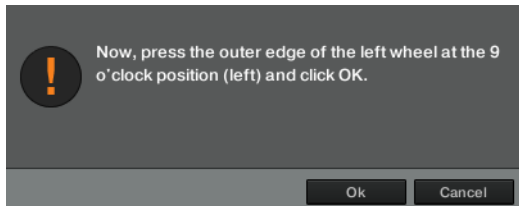
- Click **Ok** to continue. If the wheel was pressed correctly the following window is displayed.



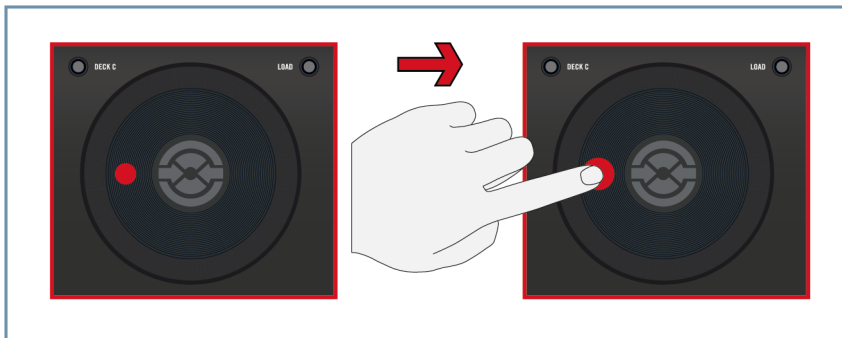
- Following the instructions press and release the top surface of the jog wheel at the 6 o'clock position as illustrated below.



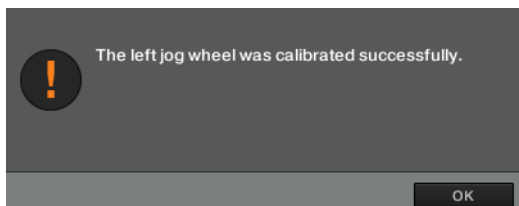
8. Click **Ok** to continue. If the wheel was pressed correctly the following window is displayed.



9. Following the instructions press and release the top surface of the jog wheel at the 9 o'clock position as illustrated below.



10. Click **Ok** to continue. A window should now be displayed indicating that the jog wheel was successfully calibrated.



11. Click **Ok** to return to the Preferences window.

→ Congratulations, the push sensitivity of the left jog wheel has now been recalibrated!

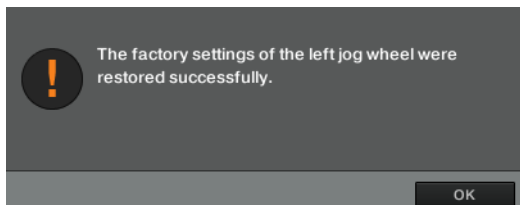
To calibrate the right jog wheel as well click on the **Recalibrate Right** button in the S4 controller preferences and follow the same steps as described above for the right jog wheel. If the calibration failed please try again and take care to closely follow the instructions.

## 2.2 Option 2: Restore

► If you wish to revert to the jog wheel calibration settings applied in the factory click [Restore](#) in the calibration dialog shown below.



→ A window is displayed to confirm that the factory calibration settings of the jog wheel were successfully restored.



► Click [OK](#) to return to the Preferences window. The same procedure can be used to restore the factory settings of the right jog wheel by selecting [Recalibrate Right](#) in the S4 controller preferences and following the instructions above.

## 2.3 Jog Wheel Calibration Failure

If the jog wheel is not pressed correctly at any point during the calibration a failure message will appear (see Image below) indicating the recalibration has failed. Click [OK](#) to return to the Preferences window. This will also restore the calibration settings the wheel had before starting the recalibration procedure. To start again click [Calibrate Left](#) and follow the steps described above, ensuring you press at the appropriate location on the jog wheel without using excessive pressure.

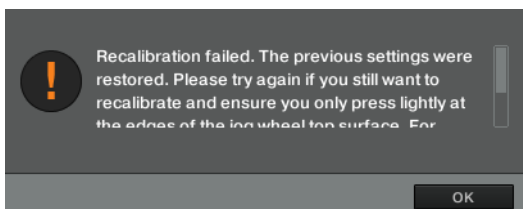
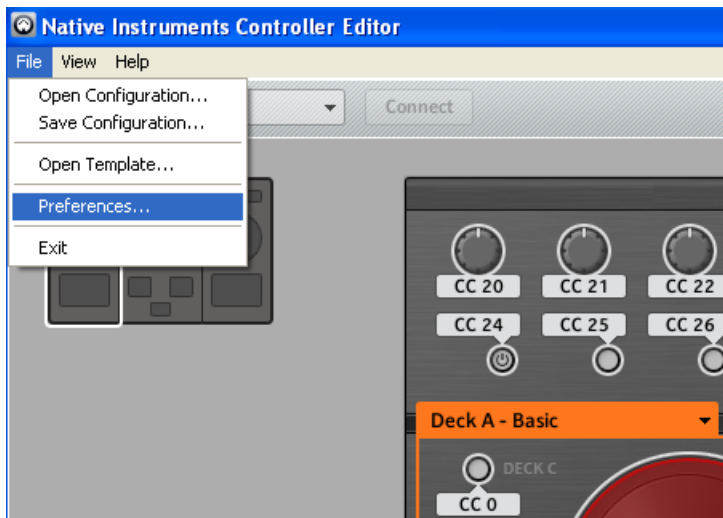


Fig. 2.1 Jog wheel calibration failure message

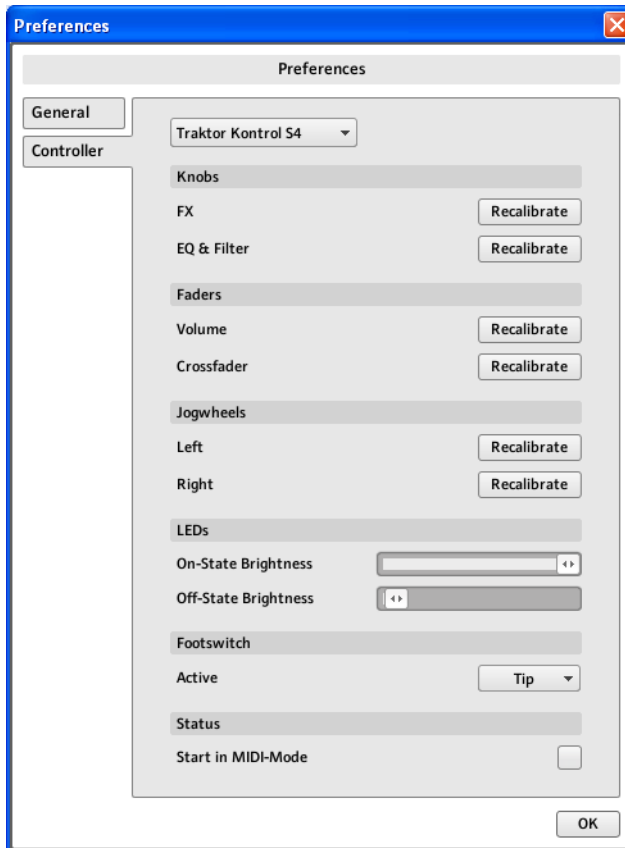
### 3 Calibration in Controller Editor

Alternatively, you can calibrate the TRAKTOR KONTROL S4's Jog Wheels using the Controller Editor application. Note that you only need to perform the calibration procedure once, either using TRAKTOR or the Controller Editor application.

1. Connect your S4 controller to the computer using the USB cable and turn it on.
2. Open the Controller Editor application and then open the Preferences window by clicking on *File > Preferences* in the application menu as shown in the image below.



3. In the Preferences window that is displayed click on the **Controller** tab and select *Traktor Kontrol S4* from the dropdown menu if it is not displayed by default.

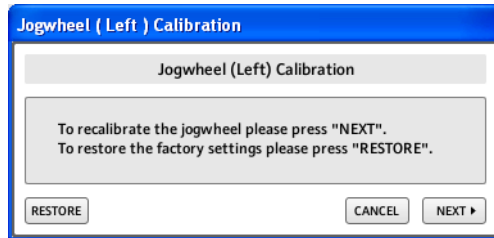


4. In the Jogwheels section click on the appropriate jog wheel recalibration button:
- **Left** > **Recalibrate**: starts the calibration dialog to recalibrate the left jog wheel (Deck A/C) on your S4 controller
  - **Right** > **Recalibrate**: starts the calibration dialog to recalibrate the right jog wheel (Deck B/D) on your S4 controller



The remainder of this section will cover calibration of the left (Deck A/C) jog wheel. To recalibrate the right jog wheel the steps are exactly the same except that “left” is replaced with “right” in all the dialog windows.

► After clicking on the Recalibrate button for the left jog wheel the following dialog window pops up.



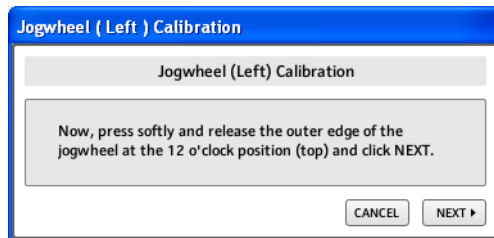
There are **two calibration options**:

- **Next**: continues the manual recalibration of the jog wheel
- **Restore**: restores the factory calibration settings of the jog wheel

These options are covered in more detail in the sections below. To return to the Preferences window without recalibrating click **CANCEL**.

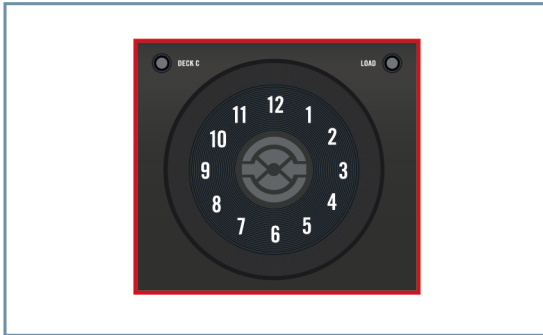
### 3.1 Option 1: Calibrate (NEXT button)

1. Click on the **NEXT** button to display the first of the manual calibration windows (Note: Clicking **Cancel** in any of the calibration windows will return you to the Preferences window and maintain the existing calibration settings of your jog wheel).

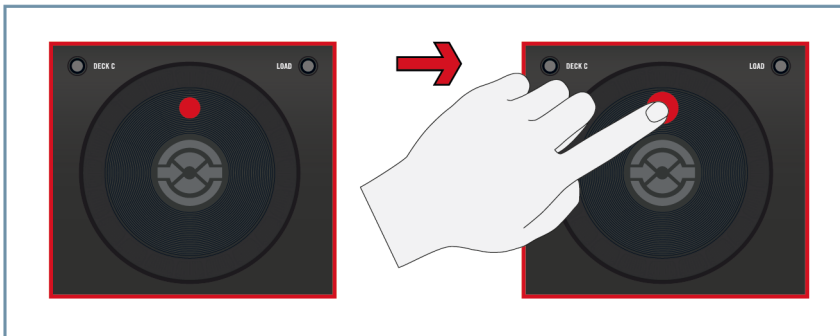




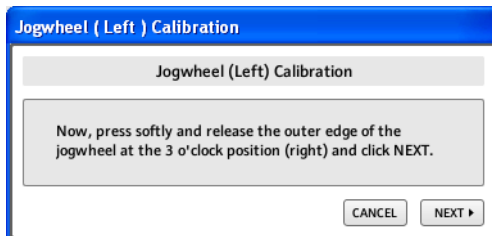
2. Now imagine the top, flat surface of the jog wheel as the face of a clock.



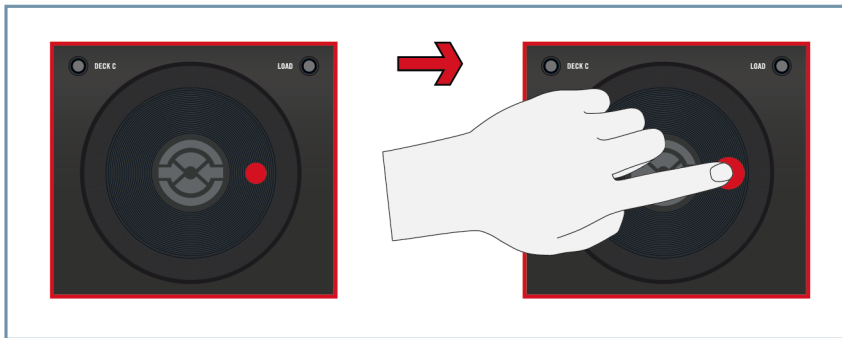
3. With one finger press at the edge of the top surface of the jog wheel lightly at the 12 o'clock position (see image below). For optimal calibration press as close to the edge of the flat surface as possible (as shown by the red dot in the image) but do not press on the rubber outer rim of the wheel.



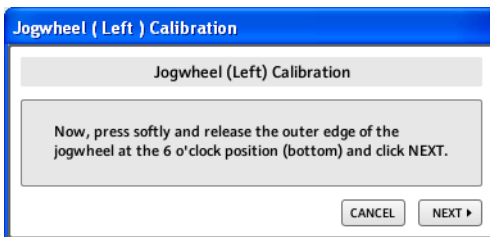
4. Release the jog wheel and click **NEXT** in the Controller Editor calibration window. If the wheel was pressed correctly the following window is displayed.



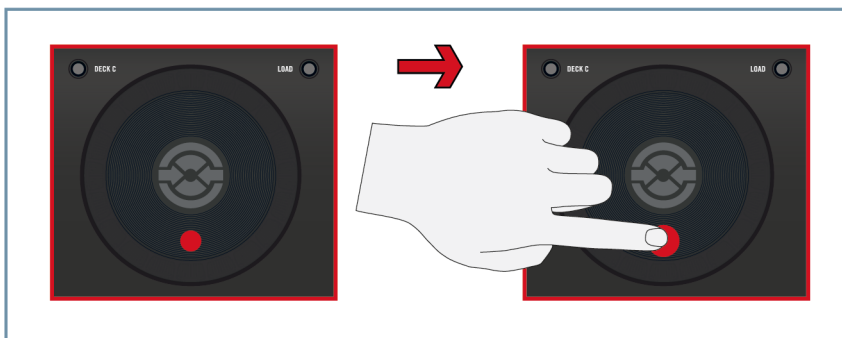
5. Following the instructions press and release the top surface of the jog wheel at the 3 o'clock position as illustrated below.



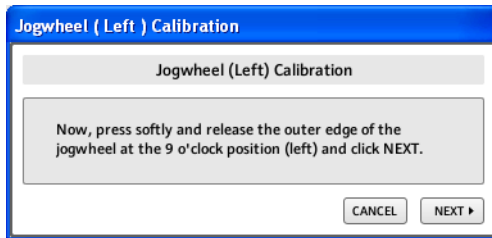
6. Click **NEXT** to continue. If the wheel was pressed correctly the following window is displayed.



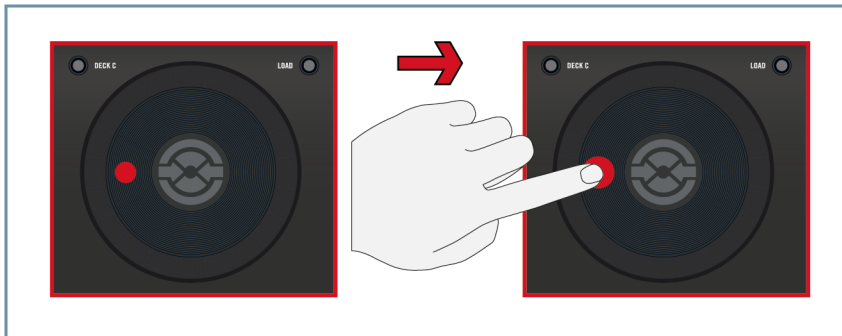
7. Following the instructions press and release the top surface of the jog wheel at the 6 o'clock position as illustrated in the next image.



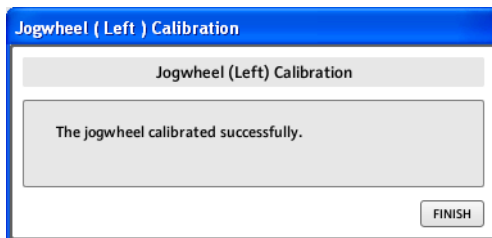
8. Click **NEXT** to continue. If the wheel was pressed correctly the following window is displayed.



9. Following the instructions press and release the top surface of the jog wheel at the 9 o'clock position as illustrated below.



10. Click **NEXT** to continue. A window should now be displayed indicating that the jog wheel was successfully calibrated.

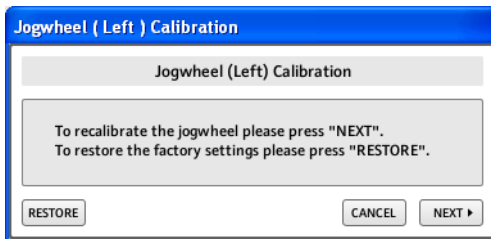


11. Click **FINISH** to return to the Preferences window.  
→ Congratulations, the push sensitivity of the left jog wheel has now been recalibrated!

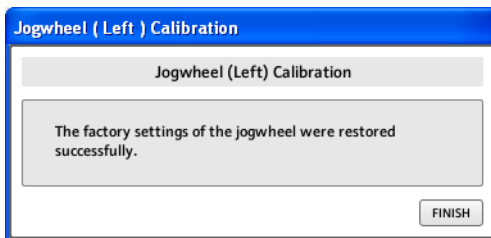
► To calibrate the right jog wheel as well click on the Right [Recalibrate](#) button in the S4 controller preferences and follow the same steps as described above for the right jog wheel. If the calibration failed please try again and take care to closely follow the instructions.

## 3.2 Option 2: Restore

► If you wish to revert to the jog wheel calibration settings applied in the factory click [RESTORE](#) in the calibration dialog shown below.



→ A window is displayed to confirm that the factory calibration settings of the jog wheel were successfully restored.



► Click [FINISH](#) to return to the Preferences window. The same procedure can be used to restore the factory settings of the right jog wheel by selecting [Recalibrate](#) for the right jog wheel in the TRAKTOR KONTROL S4 controller preferences and following the instructions above.

### 3.3 Jog Wheel Calibration Failure

If the jog wheel is not pressed correctly at any point during the calibration, a failure message will appear (see Image below) indicating the recalibration has failed. Click [FINISH](#) to return to the Preferences window. This will restore the calibration settings the wheel had before starting the recalibration procedure. To start again click [Recalibrate](#) for the left jog wheel and follow the steps above.

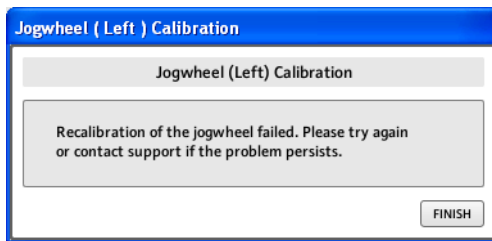


Fig. 3.1 Jog wheel calibration failure message

## 4 Further Assistance

If you have difficulties recalibrating your jog wheels and the factory settings are not working as expected please refer to the support area at <http://www.native-instruments.com> where you can consult the NI Knowledge Base and find contact details for our support team.