

LIVE CONTROL MIXER ZERO4
LIVE CONTROL CONSOLE ZERO8
ZERO Edit

The names of products and companies appearing in this document are the trademarks or registered trademarks of their respective corporate owners.

Contents

1. Introduction	3
Preparations	3
2. Common menu bar	3
3. Fader Setting tab	4
4. MIDI Assign tab	5
Parameter names	6
5. EQ Status tab	7
6. Audio I/O Setting tab	8
I/O Assign	9

1. Introduction

ZERO EDIT is an application for PC/Macintosh that lets you connect the ZERO4/ZERO8 to your computer via a FireWire or MIDI cable, allowing you to make detailed settings, and edit and save parameters.

Preparations

- 1) Using a FireWire cable or MIDI cables, connect the ZERO4/ZERO8 to your computer.
- 2) Make MIDI Port settings in the ZERO Edit.
To make MIDI settings, use the ZERO Edit's menu bar to choose MIDI > MIDI Setup..., and make the desired MIDI In and MIDI Out settings in the dialog box that appears.
- 3) The available MIDI ports will be displayed according to the MIDI device that's connected.
In this setup, choose Auto Detect for both In and Out.

2. Common menu bar

Here you can access settings for the ZERO Edit, and save or load data.

[File]

- Open: Loads previously-saved settings.
Save: Overwrites the currently-edited settings onto the existing file.
Save As: Saves the currently-edited settings as a different file.
Exit: Closes the ZERO Edit.



*When you have finished making settings, you must exit ZERO Edit and verify that the connection to the console has been terminated before you power-off the console.
If you power-off the console before you exit ZERO Edit, the settings you made may be lost.*

[Edit]

- * Operations in these popups are available only if you've selected the MIDI Assign tab.
* Editing operations are performed for each item; they are not operations for individual parameters.
Cut: Cuts an item.
Copy: Copies an item.
Paste: Pastes an item.
Clear: Returns the edited item to its default value.

[MIDI]

MIDI Setup: Opens the Preferences dialog box, allowing you to specify the MIDI port for MIDI In and MIDI Out. If you select Auto Detect for both In and Out, the MIDI ports for ZERO Edit will be automatically chosen from the available MIDI devices.

3. Fader Setting tab

Here you can create and specify the curve for each fader and the crossfader.



Channel fader curve settings

Here you can edit and specify the fader curve for each of the channel faders. You can edit the POSITION and the CURVE for each channel.

Cross fader curve setting

Here you can specify the fader curve for the cross fader. You can edit the POSITION and the CURVE.

Editing procedures

- 1) You can use the mouse to edit the curve intuitively by dragging the “handles” (✚) for POSITION and CURVE that appear on the curve graphic.
- 2) You can use the mouse to drag the POSITION or CURVE values upward or downward.
- 3) You can double-click a value and type it directly in from the keyboard to specify a precise setting.

SYNC ALL button

By enabling the SYNC ALL button, you can edit the fader curve settings for all channels 1–8 simultaneously.

4. MIDI Assign tab

“Screen when the ZERO8 is connected”

Mixer Ch No1–8 Control A–D

Control Item No/(Name) Parameter editing area

Control	MIDI CH	TYPE	No.	Min	Max	Behavior	Name
KNOBS							
1(HI)	1	CC	0	0	127	-----	
2(MID-F)	1	CC	1	0	127	-----	
3(MID)	1	CC	2	0	127	-----	
4(LO)	1	CC	3	0	127	-----	
5(PAN)	1	CC	4	0	127	-----	
6(EXT01)	1	CC	5	0	127	-----	
7(EXT02)	1	CC	6	0	127	-----	
8(FX SEND)	1	CC	7	0	127	-----	
Switch							
9(SOLO)	1	CC	8	127	0	Momentary	
10(MUTE)	1	CC	9	127	0	Momentary	
11(CUE)	1	CC	10	127	0	Momentary	
MODULE							
12(Fader)	1	CC	11	0	127	-----	
13(A Sw)	1	CC	12	127	0	Momentary	
14(B Sw)	1	CC	13	127	0	Momentary	

“Screen when the ZERO4 is connected”

The ZERO4 has mixer channels 1–4
(no Control)

Parameter names

Control	MIDI CH	TYPE	No.	Min	Max	Behavior	Name
KNOBS							
1(HI)	1	CC	0	0	127	-----	
2(MID-F)	1	CC	1	0	127	-----	
3(MID)	1	CC	2	0	127	-----	
4(LO)	1	CC	3	0	127	-----	
5(PAN)	1	CC	4	0	127	-----	
6(EXT01)	1	CC	5	0	127	-----	
7(EXT02)	1	CC	6	0	127	-----	
8(FX SEND)	1	CC	7	0	127	-----	
Switch							
9(SOLO)	1	CC	8	127	0	Momentary	
10(MUTE)	1	CC	9	127	0	Momentary	
11(CUE)	1	CC	10	127	0	Momentary	
MODULE							
12(Fader)	1	CC	11	0	127	-----	
13(A Sw)	1	CC	12	127	0	Momentary	
14(B Sw)	1	CC	13	127	0	Momentary	

Mixer channels 1–8 (when the ZERO8 is connected)

The display is divided into three areas; KNOBS (the eight knobs on the actual mixer), Switch (the switches located between the faders and knobs), and MODULE (the fader and A/B switches on the mixer).

Mixer channels 1–4 (when the ZERO4 is connected)

The display is divided into three areas. From above, these are KNOBS (the eight knobs on the actual mixer), Switch (the switches located between the faders and knobs), and MODULE (the fader and A/B switches on the mixer).

* If the ZERO4 is connected, Control A–D are not shown in the editor since they do not exist on the actual mixer.

Control Item No. / (Name)

This area shows the number of the editable item and its name in parentheses ().

When you operate an item on the actual mixer, the focus in the editor will move to the corresponding item.

Parameter names

Control: Controller name

MIDI CH.: Specifies the output destination MIDI channel.

TYPE: Specifies the type of MIDI message that will be transmitted (CC or Note number).

No.: Indicates the number of the message specified by TYPE.

Min: Specifies the minimum value set by the knob etc., if you've assigned a CC. If you've assigned a Note, this field is not shown.

Max: Specifies the maximum value set by the knob etc., if you've assigned a CC. If you've assigned a Note, this specifies the velocity value.

Behavior:

 Momentary = The specified action will occur only while you're holding down the switch.

 Toggle = The specified action will alternate each time you press the switch.

 * Behavior can be specified only for switches.

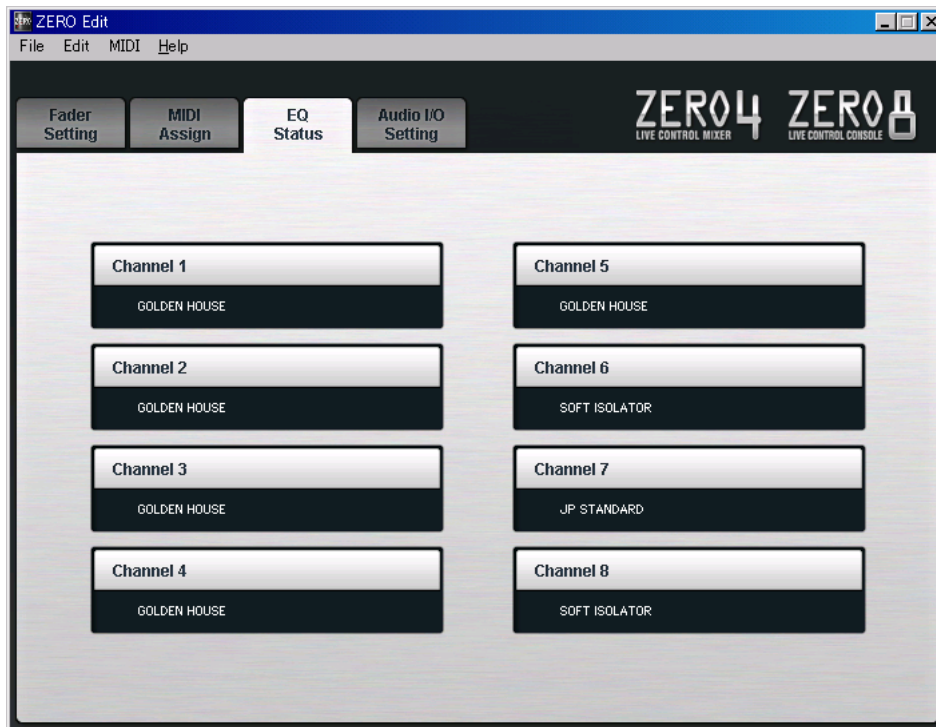
Name: If the ZERO8 is connected, you can rename each item for Control A–D. You can view the assigned names in the display of the actual mixer.

The available characters are the alphabet (A–Z, a–z), numerals (0–9), and spaces. You can use up to eight characters.

5. EQ Status tab

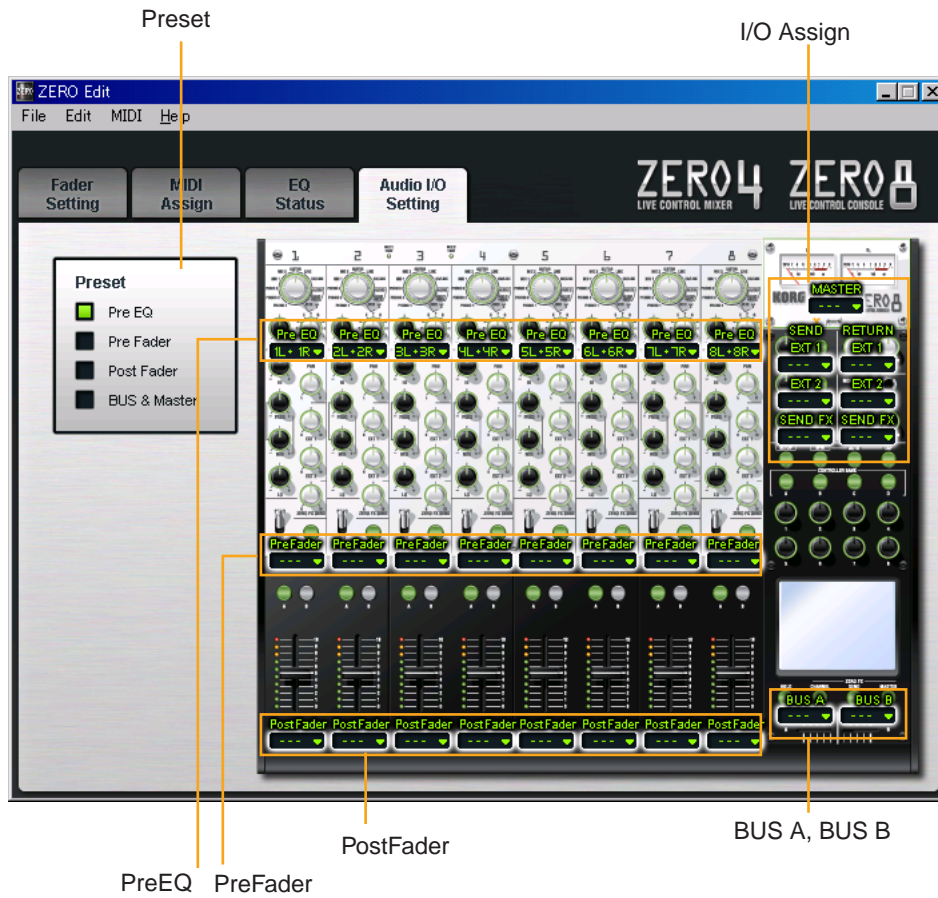
This shows the EQ type assigned on the mixer for each channel.

* If the ZERO4 is connected, this will show only channels 1–4.

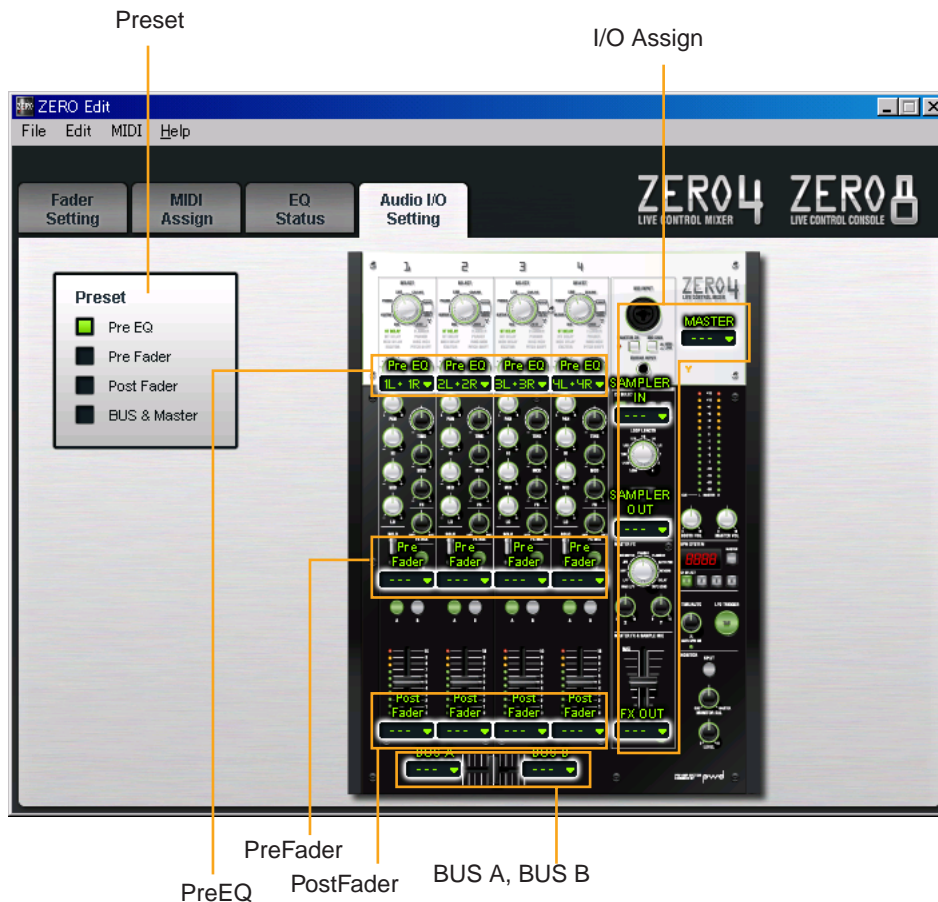


6. Audio I/O Setting tab

“Screen when the ZERO8 is connected”



“Screen when the ZERO4 is connected”



I/O Assign

Popup window (click ▼ to access)

Click one of the ▼ symbols shown on the graphic of the mixer, and a popup window will appear, allowing you to set the parameter.

• Mixer channel assignments

In this graphic representation, for each mixer channel, you can select from where in the mixer signal chain the FireWire output will be sent—Pre EQ, Pre Fader, or Post Fader

PreEQ: Assigns the pre-EQ sound to the FireWire output.

PreFader: Assigns the post-EQ pre-fader sound to the FireWire output.

PostFader: Assigns the post-fader sound to the FireWire output.

• Bus assignments

In addition to sending the individual mixer channels, you can also assign the various bus signals to the FireWire outputs. You cannot assign multiple signals to the same FireWire output. For example, if you set mixer channel 3 to send its Pre Fader signal to FireWire outputs 3L + 3R, and then set the EXT2 SEND Bus to FireWire outputs 3L + 3R, mixer channel 3 will be unassigned.

MASTER: Assigns the sound from MASTER to the FireWire output.

BUS A: Assigns the sound from CROSS BUS A to the FireWire output.

BUS B: Assigns the sound from CROSS BUS B to the FireWire output.

- **For the ZERO8**

EXT1 (SEND): Assigns the sound from the EXT1 send bus to the FireWire output.

EXT1 (RETURN): Assigns the sound received at the EXT1 return jack to the FireWire output.

EXT2 (SEND): Assigns the sound from the EXT2 send bus to the FireWire output.

EXT2 (RETURN): Assigns the sound received at the EXT2 return jack to the FireWire output.

SEND FX (SEND): Assigns the sound from the send effect bus to the FireWire output.

SEND FX (RETURN): Assigns the send effect return sound to the FireWire output.

- **For the ZERO4**

SAMPLER IN: Assigns the sound being input to the loop sampler to the FireWire output.

SAMPLER OUT: Assigns the sound being output from the loop sampler to the FireWire output.

FX OUT: Assigns the sound being output from the master effect to the FireWire output.

Preset

These presets allow you to make FireWire audio output assignments for each area.

Pre EQ: Assigns the pre-EQ sound of all channels to the FireWire output.

PreFader: Assigns the post-EQ pre-fader sound of all channels to the FireWire output.

PostFader: Assigns the post-fader sound of all channels to the FireWire output.

Bus & Master: Assigns the sound of each bus (e.g., AUX) to the FireWire output.

Note: If the sampling frequency is set to 192 kHz, only channels 1–4 can be used. Audio outputs assigned to channels 5–8 will be ignored.