

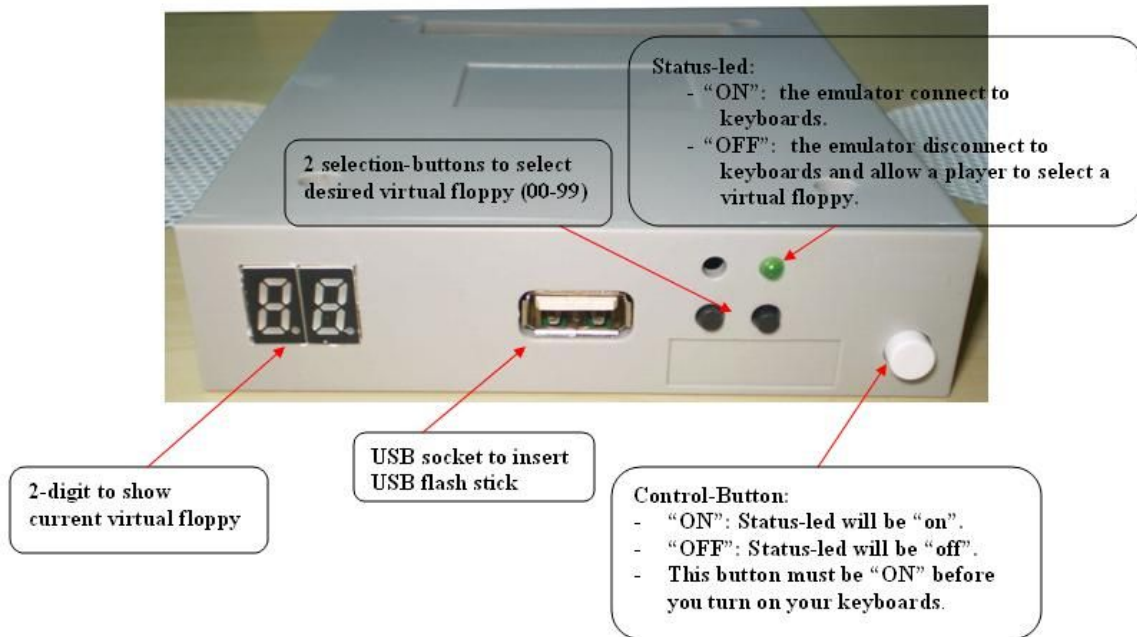
Quick Guide

---*---

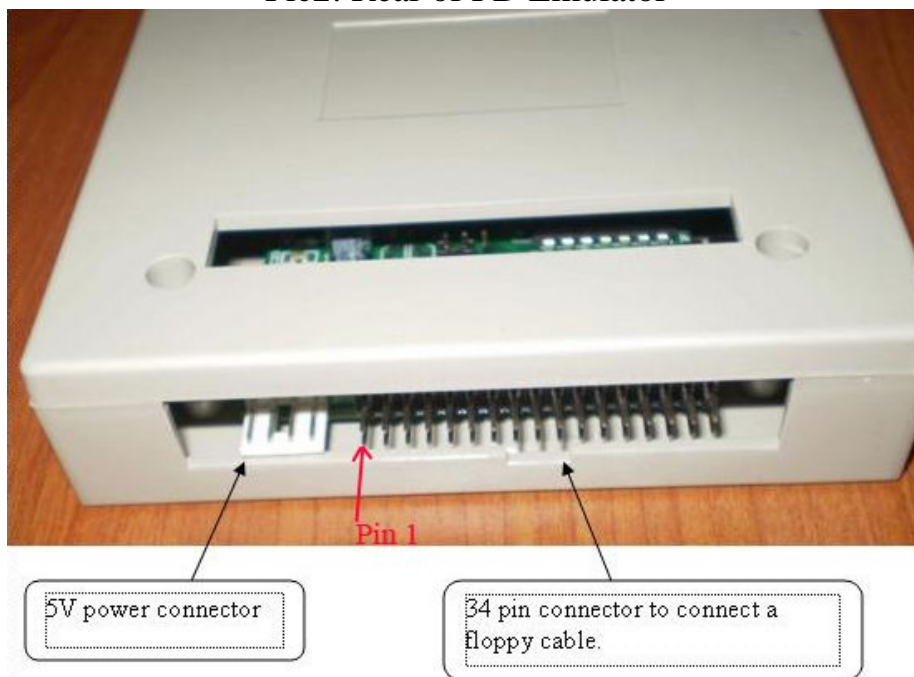
3.5 inch 1.44Mb USB-Floppy Drive Emulator For Yamaha PSR 340, 350, 450, 540, 550, 630, 640, 730, 740, 1000, 1100, 2000, 2100.

1) FD Emulator:

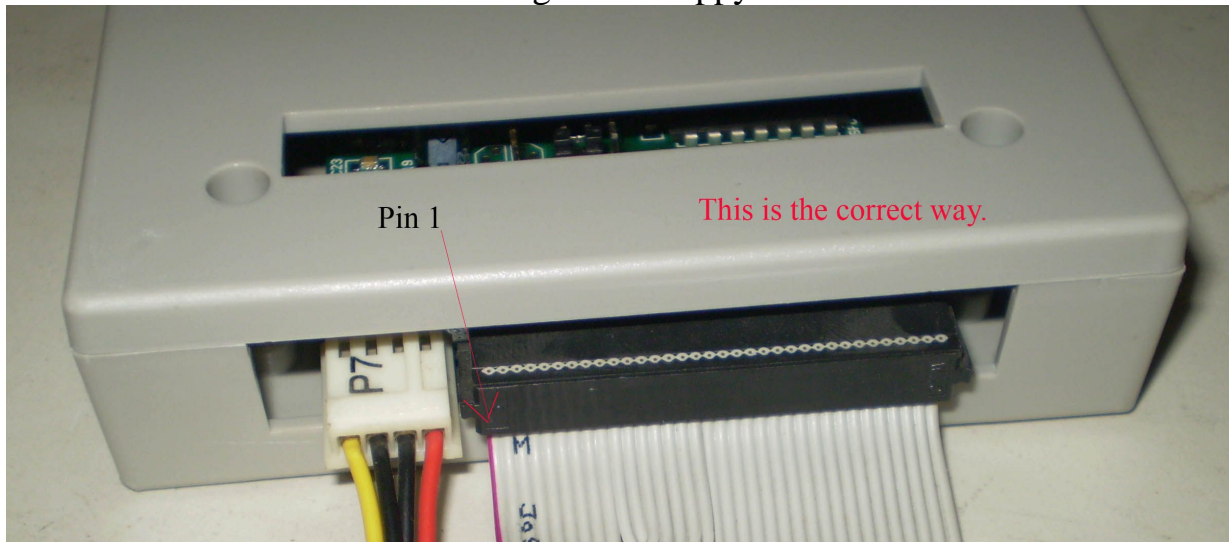
Pic1: Front of FD Emulator.



Pic2: Rear of FD Emulator



Pic3: Plug in the floppy cable



Pic4: Status of FD Emulator



You must push on the control button before you turn on your keyboards. The green LED will be always ON when your keyboards is ON. You will get an error “Disk error” when you don’t push on the control button.

Two small dots beside 2 digits show the status of USB flash drive.

- Two small dots are ON : No USB flash drive connected to FD Emulator.
- Two small dots are OFF : USB flash drive connected to FD Emulator

Pic5: USB flash drive connected to FD Emulator



How to change a virtual floppy:

- Push off the control button. The green LED will be off



- Use 2 selection buttons to select the virtual floppy that you want.



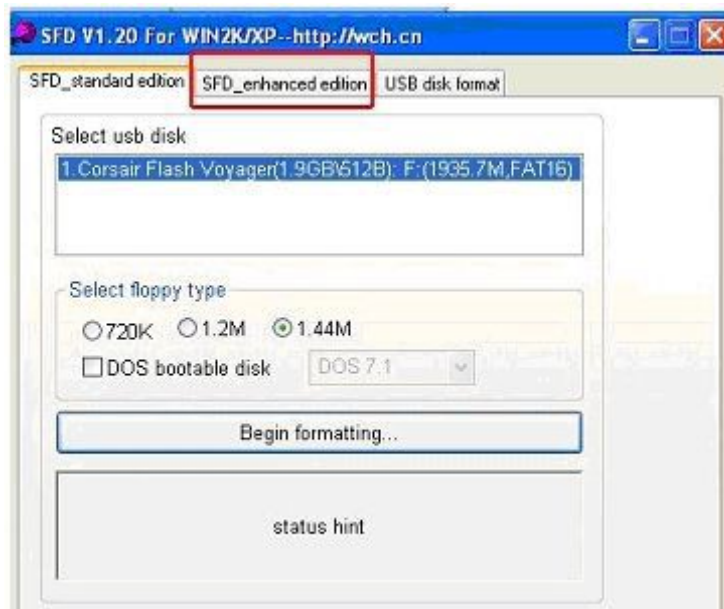
- Push on the control button again. The green LED will be on. Then the keyboards will read data from the virtual floppy that you select.

2) Prepare USB flash drive:

a. How to format an USB flash drive into 100 x 1.44Mb

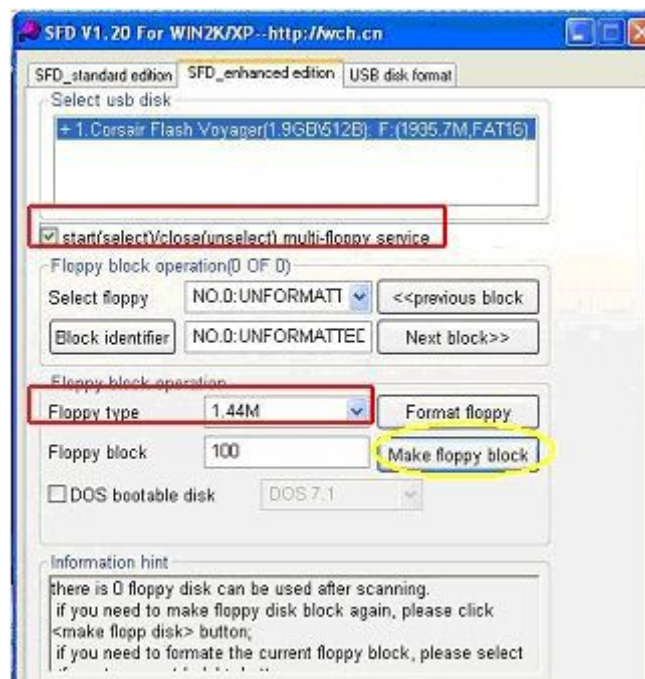
- First: Insert your usb stick into your PC.
- Second: Run V120_SFD.exe (you will see as below picture)

This program run only on WINXP



- Third:

- Select Tab "SFD_enhanced edition"
- Select check box "start(select)/close(unselect) multi_floppy service."
- Floppy type: select "1.44M"



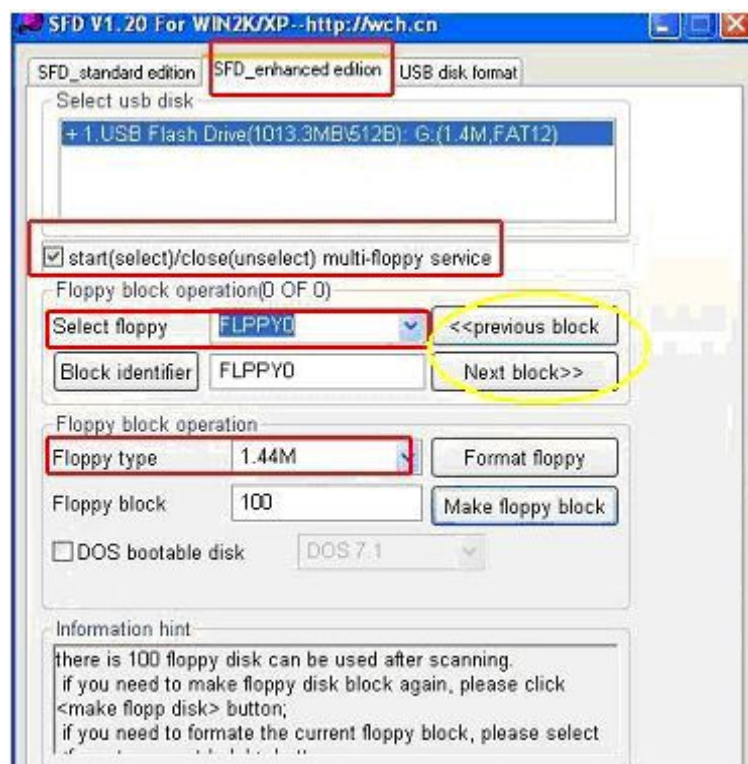
- Fourth: Press button "Make floppy block" and wait until finishing. And now, your usb stick is formatted into 100 virtual floppies. These virtual floppies are named from FLPPY00 ... FLPY99.

b. How to open a virtual floppy:

Note: Your Pc can't show 100 virtual floppies on usb stick at the same time. It can show only one virtual floppy at the time.

When you insert a usb stick (formatted) into your PC. The PC automatically recognize and display your usb stick as "FLPPY0". This is the virtual **floppy 00**. If you want to open another virtual floppy, you do like this:

- First: Run V120_SFD.exe
- Second:
 1. Select Tab "SFD_enhanced edition"
 2. Select check box "start(select)/close(unselect) multifloppy_service"
 3. Floppy type: select "1.44M"
- Third: use "previous block" button and "next block" button to travel to the floppy that you want to open. Or you can select from drop-list "Select floppy".



When you select a FLLPY^{xx}, the PC will display your usb stick as PLLPY^{xx}. (^{xx} is the ordinal number of floppy).

Remember: Unselect "multi floppy service" before close this program